



**BUILDING CODE COMPLIANCE OFFICE (BCCO)
PRODUCT CONTROL DIVISION**

**MIAMI-DADE COUNTY, FLORIDA
METRO-DADE FLAGLER BUILDING
140 WEST FLAGLER STREET, SUITE 1603
MIAMI, FLORIDA 33130-1563
(305) 375-2901 FAX (305) 375-2908**

NOTICE OF ACCEPTANCE (NOA)

**US Door & Building Components LLC
10407 Rocket Boulevard.
Orlando, FL 32824**

Scope. This NOA is being issued under the applicable rules and regulations governing the use of construction materials. The documentation submitted has been reviewed by Miami-Dade County Product Control Division and accepted by the Board of Rules and Appeals (BORA) to be used in Miami Dade County and other areas where allowed by the Authority Having Jurisdiction (AHJ).

This NOA shall not be valid after the expiration date stated below. The Miami-Dade County Product Control Division (In Miami Dade County) and/or the AHJ (in areas other than Miami Dade County) reserve the right to have this product or material tested for quality assurance purposes. If this product or material fails to perform in the accepted manner, the manufacturer will incur the expense of such testing and the AHJ may immediately revoke, modify, or suspend the use of such product or material within their jurisdiction. BORA reserves the right to revoke this acceptance, if it is determined by Miami-Dade County Product Control Division that this product or material fails to meet the requirements of the applicable building code.

This product is approved as described herein, and has been designed to comply with the Florida Building Code including the High Velocity Hurricane Zone.

DESCRIPTION: Model 566-DCC Steel Rolling Door 8'-0" Wide.

APPROVAL DOCUMENT: Drawing No. 566-54-96, dated 08/02/99, with last revision on 06/05/05, and titled "Model 566-54-96", sheets 1 of 1, prepared by US Door & Building Components. Signed and sealed by J. H. Dixon Jr PE, bearing the Miami-Dade County Product Control Renewal stamp with the Notice of Acceptance number and expiration date by the Miami-Dade County Product Control Division.

MISSILE IMPACT RATING: Large and Small Missile Impact

LABELING: Each unit shall bear a permanent label with the manufacturer's name or logo, city, state and following statement: "Miami-Dade County Product Control Approved or MDCPCA", unless otherwise noted herein.

RENEWAL of this NOA shall be considered after a renewal application has been filed and there has been no change in the applicable building code negatively affecting the performance of this product.

TERMINATION of this NOA will occur after the expiration date or if there has been a revision or change in the materials, use, and/or manufacture of the product or process. Misuse of this NOA as an endorsement of any product, for sales, advertising or any other purposes shall automatically terminate this NOA. Failure to comply with any section of this NOA shall be cause for termination and removal of NOA.

ADVERTISEMENT: The NOA number preceded by the words Miami-Dade County, Florida, and followed by the expiration date may be displayed in advertising literature. If any portion of the NOA is displayed, then it shall be done in its entirety.

INSPECTION: A copy of this entire NOA shall be provided to the user by the manufacturer or its distributors and shall be available for inspection at the job site at the request of the Building Official.

This NOA renews NOA # 05-0628.01 and, consists of this page, evidence page E-1, as well as approval document mentioned above.

The submitted documentation was reviewed by **Mohammed Iqbal Shaikh, P.E.**



MX
01/27/09

**NOA No. 08-1114.04
Expiration Date: December 28, 2009
Approval Date: January 28, 2009**

US Door & Building Components.

NOTICE OF ACCEPTANCE: EVIDENCE PAGE

A DRAWING:

1. Drawing No. 566-54-96, titled "MODEL 566-DCC", sheet 1 of 1, prepared by US Door & Building Components, dated 08/02/99, with latest revision on 06/05/05, signed and sealed by J.H. Dixon PE.

B TEST:

1. Test report on Large Missile Impact Test per PA 201, Cyclic Wind Pressure Test per PA 203 and Uniform Static Air Pressure Test per PA 202 on "Door 8"-0" Wide, 0.017 Ga.", prepared by Certified Testing Laboratories, report # CTLA 447W-1, dated 011/17/99, signed and sealed by J. H. Dixon Jr., PE.

C CALCULATIONS:

1. Calculations for attachment of guide to steel or masonry jamb, prepared by Joseph H. Dixon, Jr. P.E. dated 12/13/99, sheets 1 to 12, signed and sealed by J. H. Dixon, PE. on 12/18/99.
2. Changes to calculations of pages 5, 7 & 12, prepared by Joseph H. Dixon, Jr. PE, dated 02/04/00, signed and sealed by J. H. Dixon, Jr. PE.
3. Calculations prepared by US Door and building Components on 06/05/05, pages 1 through 12 signed and sealed by J.H. Dixon Jr PE.

D QUALITY ASSURANCE:

1. Miami-Dade Product Control Office.

E STATEMENTS:

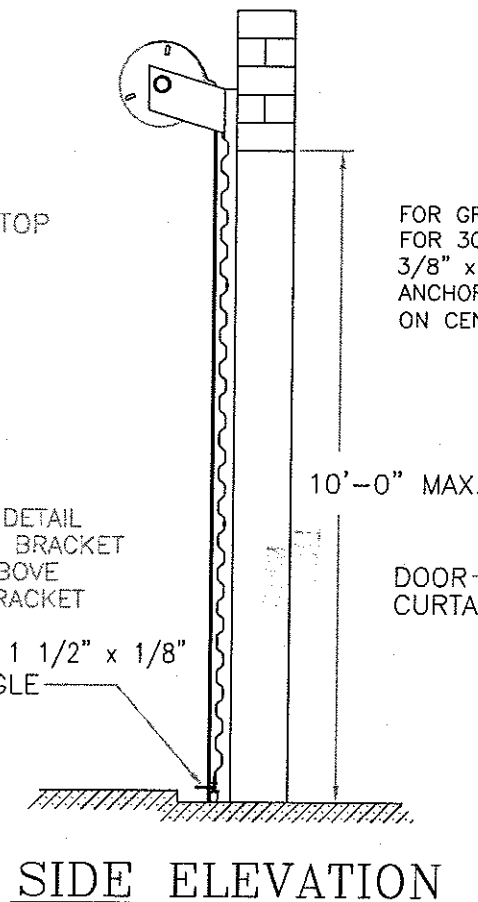
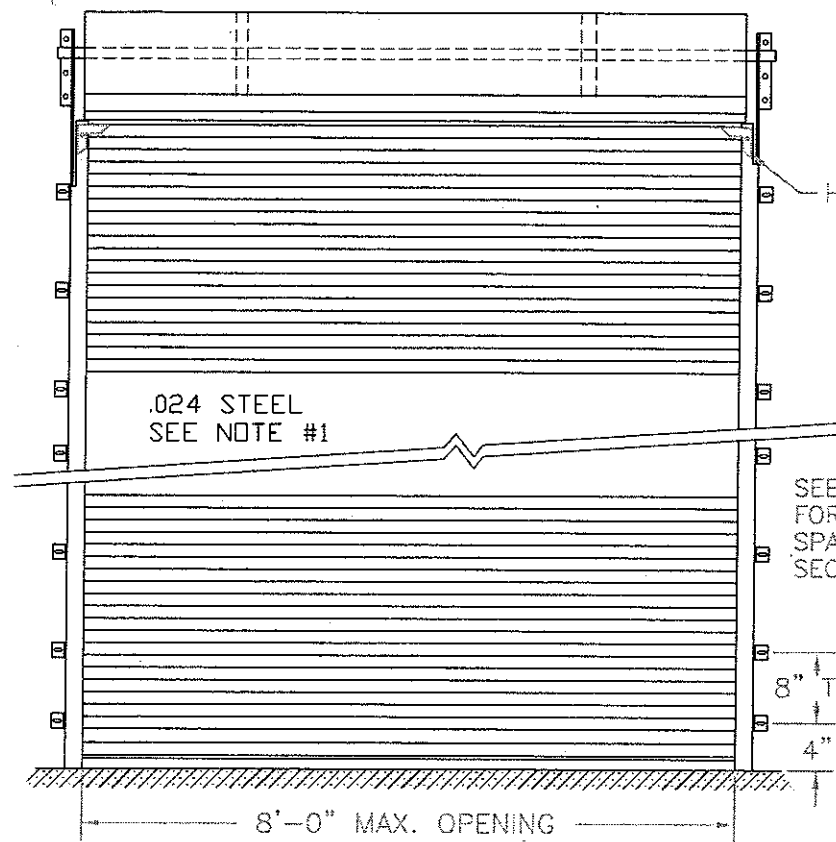
1. Code Compliance letter issued by Joseph H. Dixon, Jr. PE, on 04/06/200, signed by J. H. Dixon Jr. PE.
2. Code Compliance letter issued by Joseph H. Dixon, Jr PE on 06/21/05 signed and sealed by J.H. Dixon Jr PE.
3. U.S. Door & Building Components LLC's letter dated 10/20/08 for planned testing date.
4. Certified Testing Laboratories letter dated 10/20/08 for planned testing date for the product.

F MATERIAL CERTIFICATION:

1. Certified Testing Laboratories, Test Report # CTLA-4447W-1 of test per ASTM E8, of 0.17 STEEL, dated 11/17/99, signed by R. Patel, P.E.
2. Evaluation of organic coatings on galvanized steel sheet per ASTM D1654, prepared by ETC Laboratories on 05/10/2000, signed by S. Rucci & A. Murray.
3. No change letter issued by US Door & Building Components on 10/06/03 and signed by D. Loose.

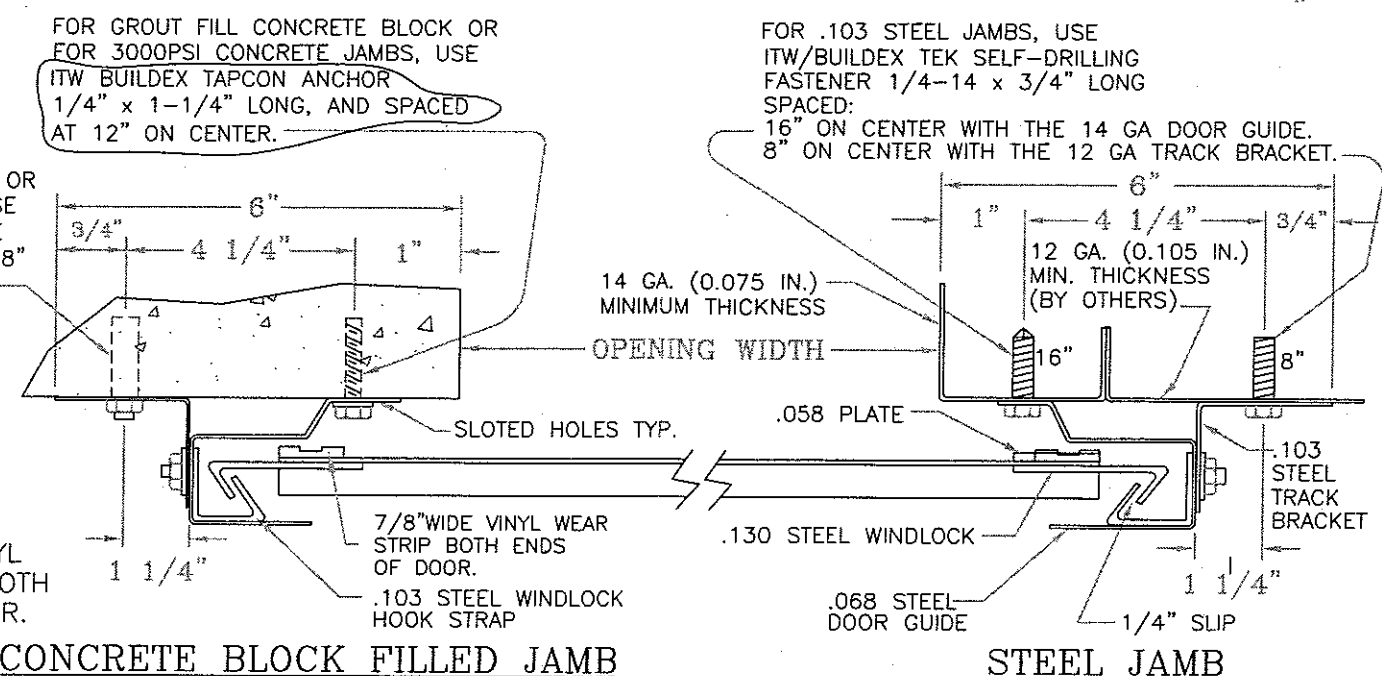


Mohammed Iqbal Shaikh, P.E.
Senior Building Code Compliance Specialist
NOA No 08-1114.04
Expiration Date: December 28, 2009
Approval Date: January 28, 2009



FOR GROUT FILL CONCRETE BLOCK OR FOR 3000PSI CONCRETE JAMBS, USE ITW BUILDDEX TAPCON ANCHOR 1/4" x 1-1/4" LONG, AND SPACED AT 12" ON CENTER.

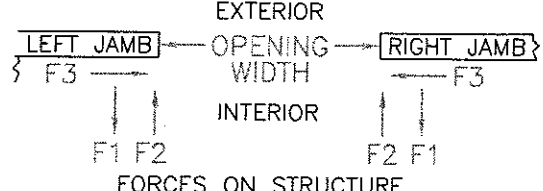
FOR GROUT FILL CONCRETE BLOCK OR FOR 3000PSI CONCRETE JAMBS, USE 3/8" x 1 7/8" HILTI STEEL SLEEVE ANCHORS ZINC FINISH, SPACED AT 8" ON CENTER.



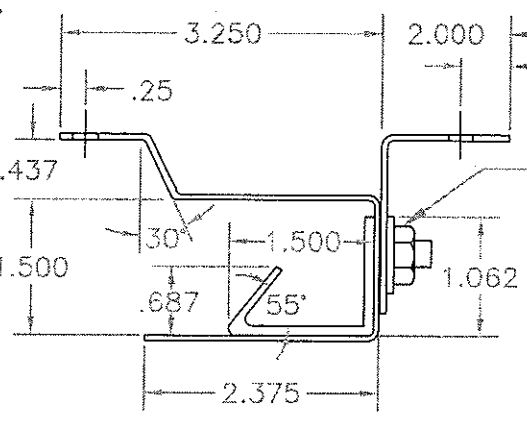
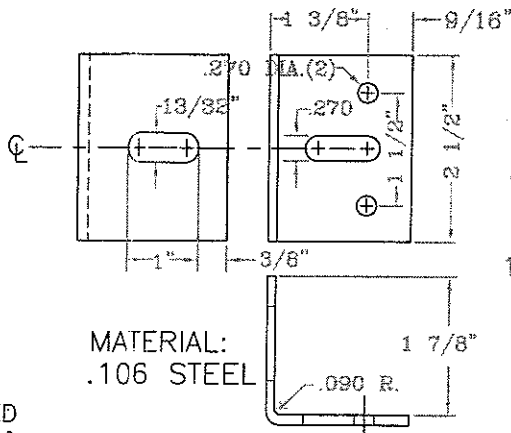
NOTE #1: STEEL USED IS ASTM A-653 SS GRADE (ei) STRUCTURAL QUALITY GRADE 40. FINISH IS G-90 GALVANIZED OR G-60 GALVANIZED WITH A BAKED ON PRIMER POLYESTER TOP COAT ON BOTH SIDES.

WINDLOCKS STAMPED FROM .130 GALVANIZED STEEL OF COMMERCIAL QUALITY AND RIVETED TO EACH CORRUGATION IN SHEET (5 WINDLOCKS AT EACH END OF EACH SHEET). WINDLOCK ATTACHED WITH TWO 3/16" STEEL POP RIVETS SUPPORTED BY .058 STEEL BACK-UP PLATES ON EXTERIOR OF CURTAIN.

STRUCTURE MUST BE DESIGNED TO SUPPORT FORCES F1, F2 & F3 (SHOWN AS LB/FT OF OPENING HEIGHT) AT EACH JAMB. VALUES ARE SHOWN IN CHART BELOW.



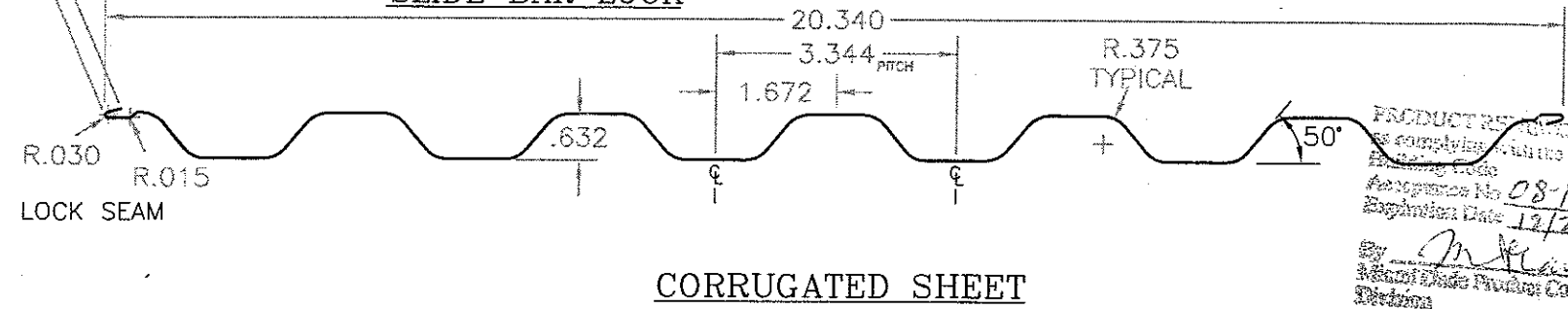
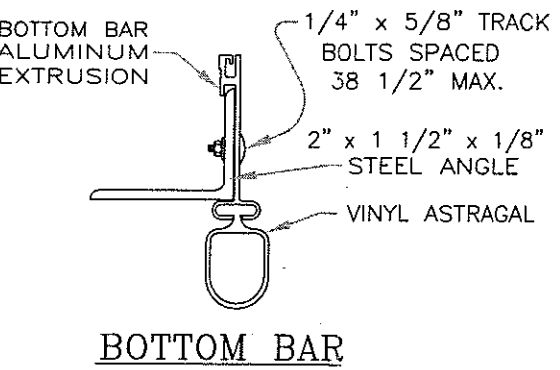
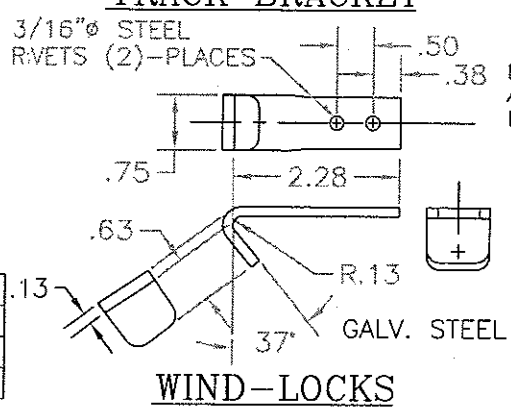
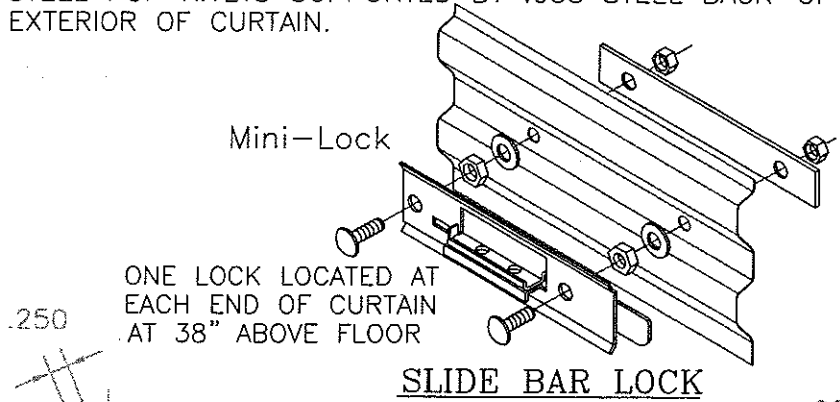
PITCH JAMB TYPE	POSITIVE			NEGATIVE		
	F1	F2	F3	F1	F2	F3
STEEL	235	49	420	141	359	604
CONCRETE BLOCK	235	49	420	141	359	604



MODEL 566-DCC

MAX. OPENING: 8' WIDE x 10' HEIGHT

46 PSF POSITIVE/54 PSF NEGATIVE



PRODUCT REVIEWED by complying with the Florida Building Code Acceptance No. 08-1114-04 Expiration Date 12/25/08

PRODUCT REVIEWED by complying with the Florida Building Code Acceptance No. 05-062801 Expiration Date 12/23/08

3	06-05-05	CHANGED SPACING ON TAPCON ANCHORS
2	11-29-00	REVISED WEAR STRIP NOTE
1	03-29-00	ADDED (2)-DETAILS

MODEL 566-54-96

Us DOOR & BUILDING COMPONENTS

2706 Rew Circle Suite 200 Ocoee, FL 34761
407.877.0100 Fax 407.877.8875 usdoor.com

JOB: _____
CONTRACTOR: _____
ARCHITECT: _____
ADDRESS: _____
DISTRIBUTOR: _____
ENGINEER: J.H. DIXON JR P.E. LIC No. FL7768

DATE: 8-2-99 SHEET 1 of 1
DRAWN BY: C.D.W.
CHECKED BY: G.O.G.
DRAWING NUMBER: 566-54-96

Handwritten signature and date:
6/6/05
FL7768

August 2, 1999